

NUMBER	DIRECTION	DISTANCE
L1	S 89°35'35" W	10.08'
L2	N 89°43'04" E	348.08'
L3	N 00°16'28" W	79.89'
L4	N 45°15'01" W	21.17'
L5	N 00°16'28" W	179.12'
L6	N 89°41'57" E	225.00'
L7	S 00°16'28" E	194.10'
L8	S 89°41'57" W	210.04'
L9	N 49°29'08" E	123.86'
L10	N 45°29'57" W	21.29'
L11	N 00°42'59" W	156.19'
L12	N 24°10'51" W	87.50'

DISTRICT AREA

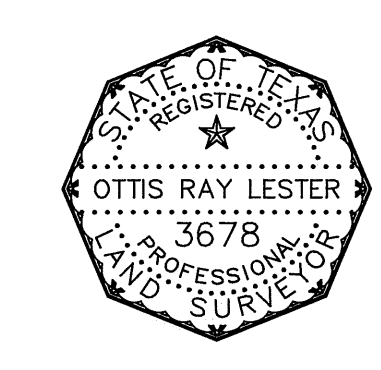
- ORIGINAL DISTRICT = 427.1709 AC.
- TRACT 2 = 1.000 AC.
- TRACT 3 = 21.729 AC.
- TRACT 4 = 0.583 AC.
- TRACT 5 = 0.623 AC.
- TRACT 6 = 1.098 AC.
- TRACT 7 = 2.203 AC.
- TRACT 8 = 38.932 AC.
- TRACT 9 = 20.698 AC.

TOTAL AREA IN DISTRICT = 514.0369

THIS BOUNDARY MAP WAS COMPILED FROM SURVEYS BY OTHERS AND PLATS AND DEEDS FILED IN THE COUNTY CLERK'S OFFICE HARRIS COUNTY, TEXAS.

TO THE BEST OF MY KNOWLEDGE AND BELIEF, THIS BOUNDARY MAP ACCURATELY REFLECTS THE PROPOSED BOUNDARIES OF HARRIS COUNTY MUNICIPAL UTILITY DISTRICT NO. 61.

OTTIS RAY LESTER, P.E., R.P.L.S.



**HARRIS COUNTY MUNICIPAL UTILITY DISTRICT NO. 61
BOUNDARY MAP
514.0369 ACRES OF LAND OUT OF
THE H. & T.C. .R.R. CO. SURVEY, A-438
THE W.C.R.R. CO. SURVEY, A-903 AND
THE G.H. LOLLY SURVEY, A-1410
HARRIS COUNTY, TEXAS**

DATE: MARCH 7, 2002
REVISED: AUGUST 1, 2007
REVISED: DECEMBER 21, 2007
REVISED: AUGUST 13, 2008

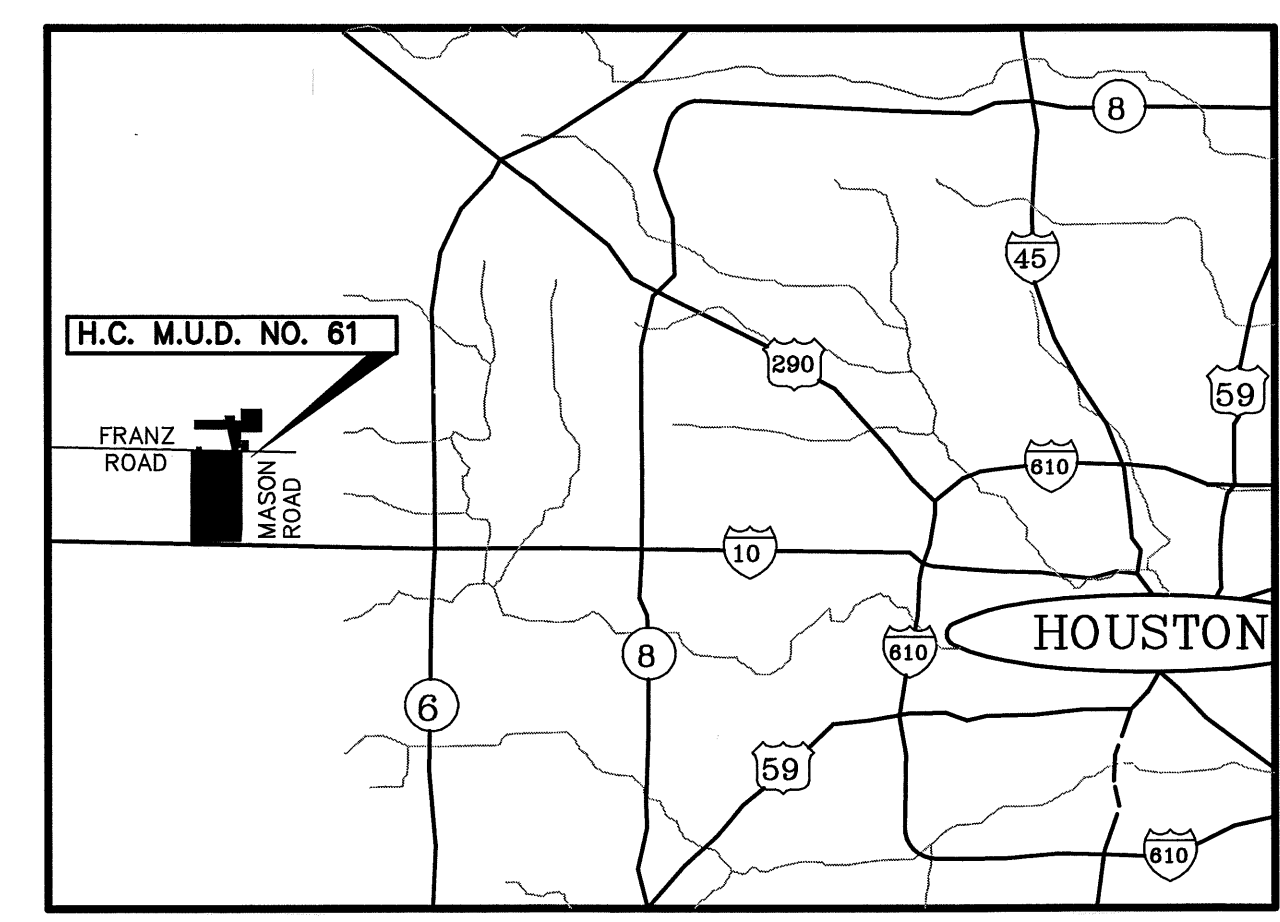
A&S ENGINEERS, INC.
10377 STELLA LINK ROAD • HOUSTON, TX. 77025-5445
PHONE 713/297-3150 • FAX 713/622-1017

S & V SURVEYING, INC.
PROFESSIONAL LAND SURVEYORS
20111 KRAHM SPRING, TEXAS 77388
OFFICE - (281) 353-2570 FAX - (281) 353-2407
E-MAIL - cad@svsurveying.com

SCALE: 1"=300'

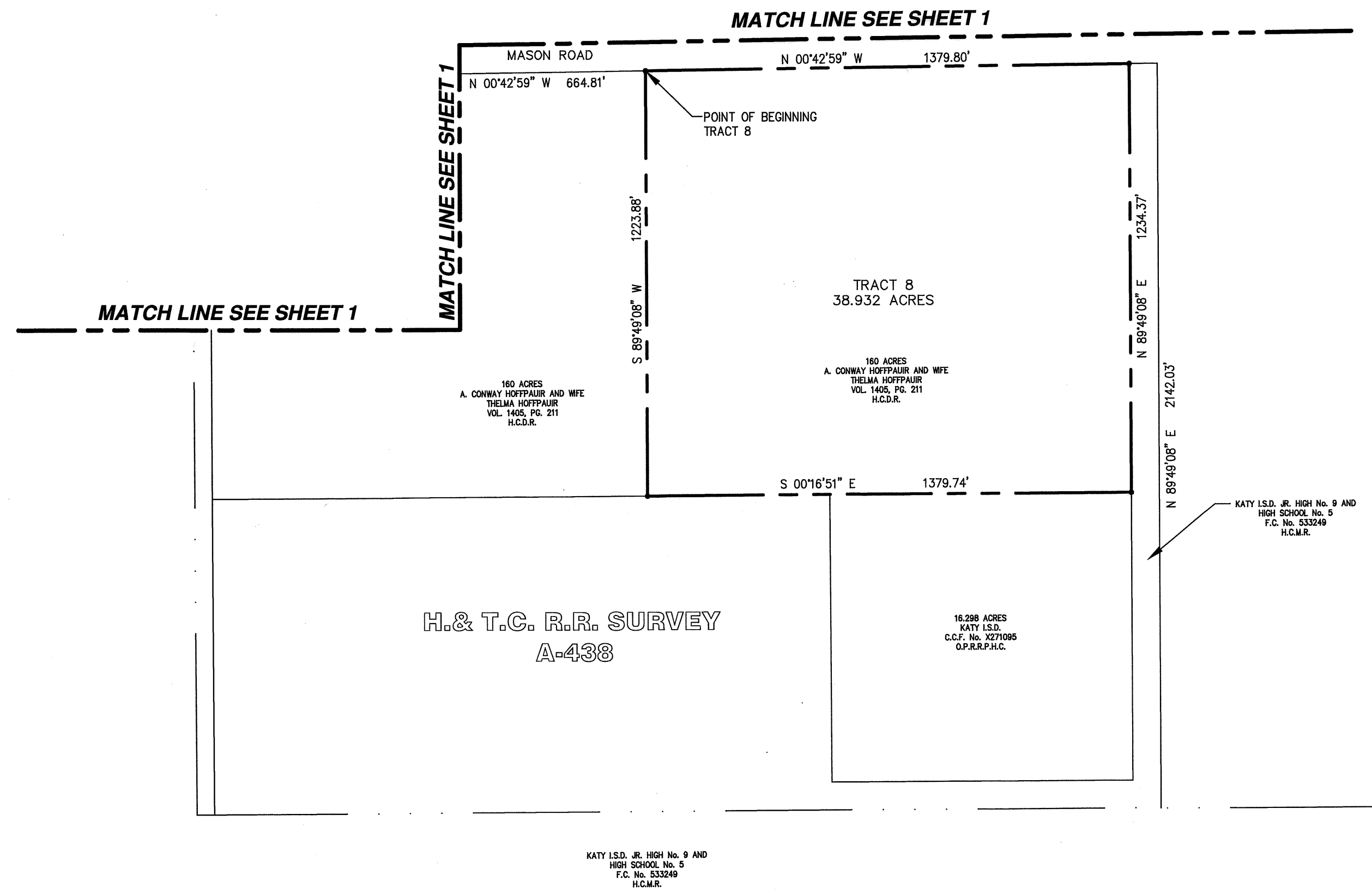
LEGEND

- DISTRICT BOUNDARY
- SURVEY LINE



VICINITY MAP

\\SERVERS\DRAWINGS\12001071\201007-004



NUMBER	DIRECTION	DISTANCE
L1	S 89°35'35" W	10.08'
L2	N 89°43'04" E	348.08'
L3	N 00°16'56" W	79.89'
L4	N 45°15'01" W	21.17'
L5	N 00°16'28" W	179.12'
L6	N 89°41'57" E	225.00'
L7	S 00°16'28" E	194.10'
L8	S 89°41'57" W	210.04'
L9	N 49°29'06" E	123.86'
L10	N 45°29'57" W	21.29'
L11	N 00°42'59" W	156.19'
L12	N 24°10'51" W	87.50'

HARRIS COUNTY MUNICIPAL UTILITY DISTRICT NO. 61
 BOUNDARY MAP
 514.0369 ACRES OF LAND OUT OF
 THE H. & T.C. .R.R. CO. SURVEY, A-438
 THE W.C.R.R. CO. SURVEY, A-903 AND
 THE G.H. LOLLY SURVEY, A-1410
 HARRIS COUNTY, TEXAS

DATE: MARCH 7, 2002
 REVISED: AUGUST 1, 2007
 ADDED TRACTS 3-12
 REVISED: DECEMBER 21, 2007
 REMOVED TRACTS 9-12
 REVISED: AUGUST 13, 2008
 ADDED TRACT 9

A&S ENGINEERS, INC.
 10377 STELLA LINK ROAD • HOUSTON, TX. 77025-5445
 PHONE 713/297-3150 • FAX 713/622-1017

S & V SURVEYING, INC.
 PROFESSIONAL LAND SURVEYORS
 20111 KRAHN SPRING, TEXAS 77388
 OFFICE - (281) 353-2570 FAX - (281) 353-2427
 E-MAIL - cad@svsurveying.com



SCALE: 1"=300'

LEGEND
 - - - - - DISTRICT BOUNDARY
 _____ SURVEY LINE